



INCLUSIVE
CARE SOLUTIONS

Astor Invincible

Height Adjustable Changing & Showering Table



Robust. Hygienic. Comfortable.

INVINCIBLE

Astor Invincible

Height Adjustable Changing & Showering Table

The Astor Invincible is believed by many experts to be the most robust changing table available, delivering uncompromised user comfort and simple hygienic upkeep & disinfection.



Patented Stretcher

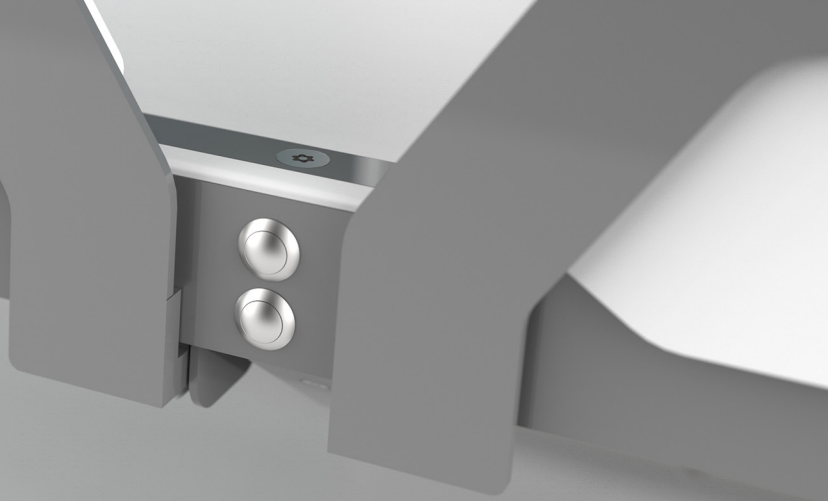
- Flexible giving great comfort
- Easy to clean & disinfect
- Highly cut resistant bed



The first & only changing table designed specifically for use in a Changing Places Toilet and public or shared environments.

Tamper-Proof Design

- Integrated controls
- Security fittings
- No removable parts
- No exposed cables
- IK10 tested product to BS EN 62262



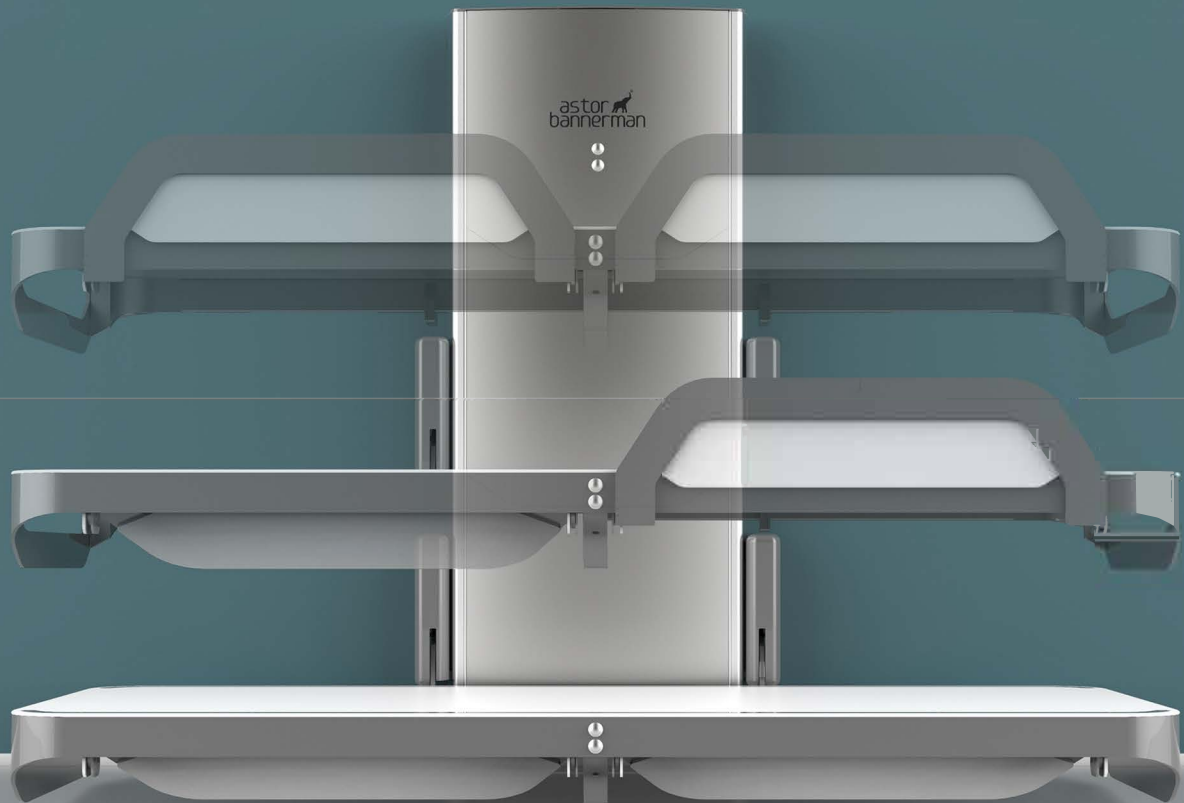
Split Guard

- Better access
- Improved care
- Versatility



Product Specification

- Height adjustable 160mm / 6.3" to 900mm / 35.4"
- Safe working load (SWL) 200kg / 441lbs
- Cut resistant flexible stretcher 1800mm x 800mm / 70.9" x 31.5"
- Vandal proof up & down buttons integrated into wall unit and stretcher
- IK10 tested product* which is the highest level of rated protection against impact
- Split guard independent operation to improve care, comfort & access



Robust. Hygienic. Comfortable.

INVINCIBLE

Inclusive Care Solutions

Tel: 03332 416 358

Email: enquiries@inclusivecaresolutions.co.uk

Visit us: www.inclusivecaresolutions.co.uk

